

---

## **APPENDIX K**

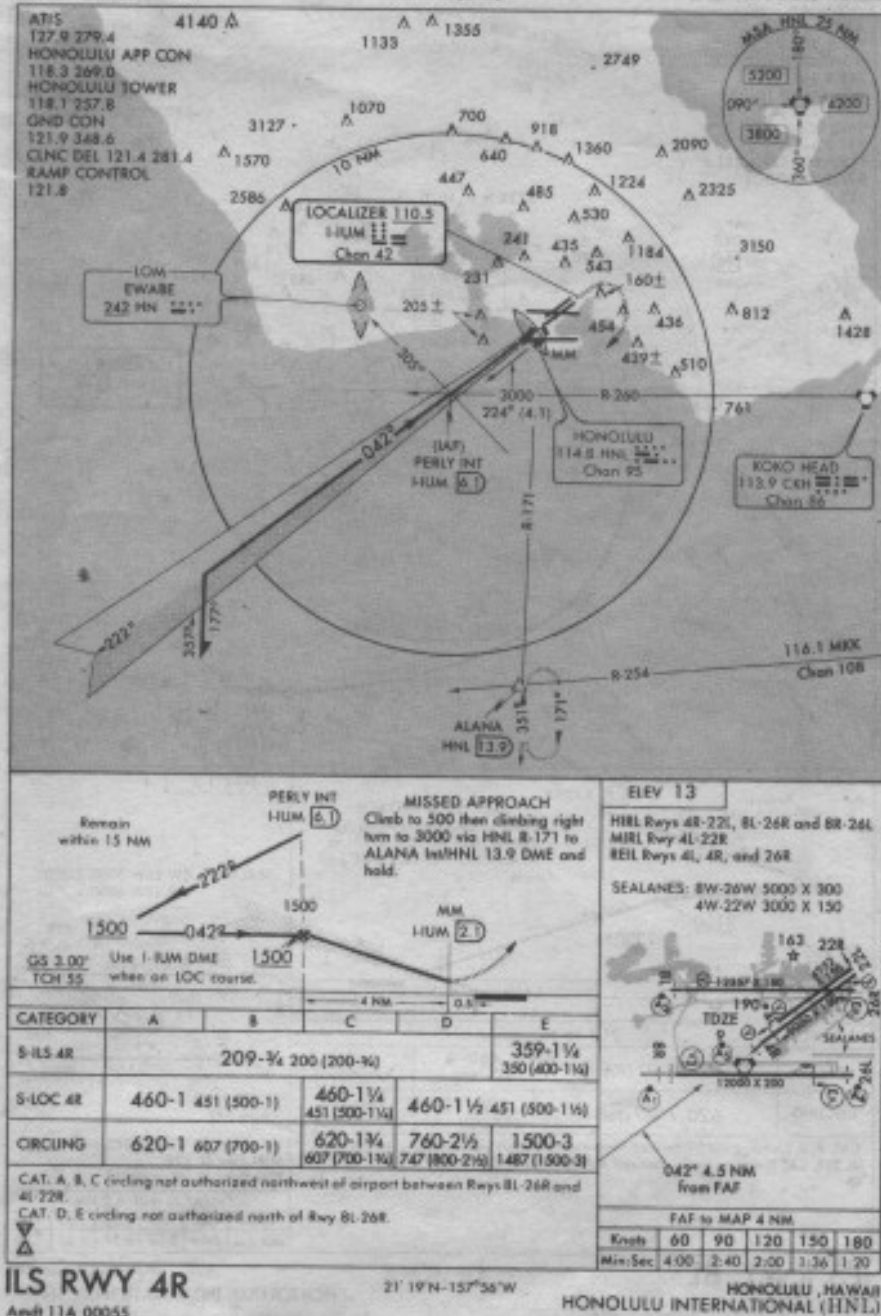
### **AIRSPACE DIAGRAMS**

---

Amdt 11A 00055

**ILS RWY 4R**

AL-754 (FAA)

**HONOLULU INTERNATIONAL (HNL)**  
HONOLULU, HAWAII

Source: U.S. Department of Transportation, 2001

**Air Space Diagram  
(ILS RWY 4R)****Figure K-1**

Amdt 21A 00055

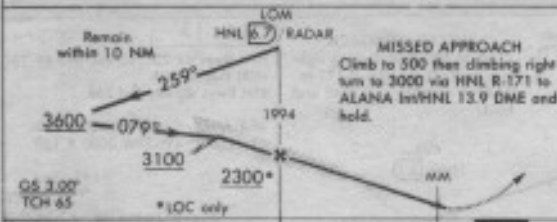
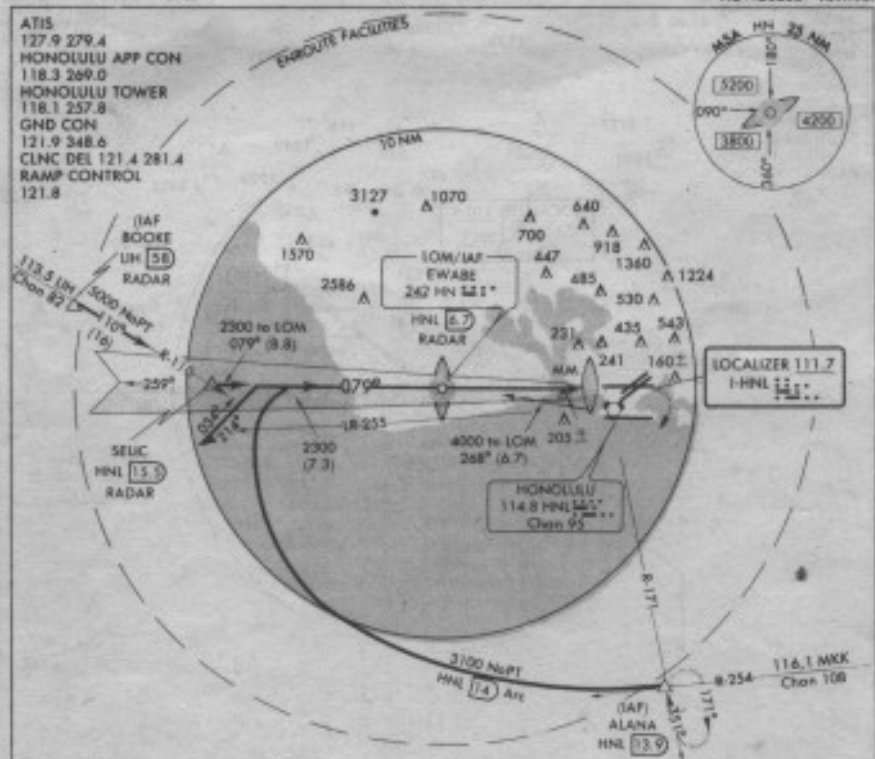
**ILS RWY 8L**

AL 734 (FAA)

**HONOLULU INTERNATIONAL (HNL)**  
HONOLULU HAWAII

ATIS

127.9 279.4  
HONOLULU APP CON  
118.3 269.0  
HONOLULU TOWER  
118.1 257.8  
GND CON  
121.9 348.6  
CLNC DEL 121.4 281.4  
RAMP CONTROL  
121.8



CATEGORY	A	B	C	D
S-ILS BL	213-1/2	200 (200-1/2)		
S-LOC BL	460-1/2 447 (500-1/2)	460-1/2 447 (500-1/2)	460-1 447 (500-1)	
CIRCLING	620-1 607 (700-1)	620-1 407 (700-1 1/2)	760-2 1/2 747 (800-2 1/2)	

CAT. A, B, C circling not authorized northwest of airport between Rwy 8L-26R and 4L-22R. CAT D circling not authorized north of Rwy 8L-26R.

**ILS RWY 8L**

Amdt 21A 00055

21°19'N-157°56'W

**HONOLULU INTERNATIONAL (HNL)**

Source: U.S. Department of Transportation, 2001

**Air Space Diagram  
(ILS RWY 8L)**

**Figure K-2**

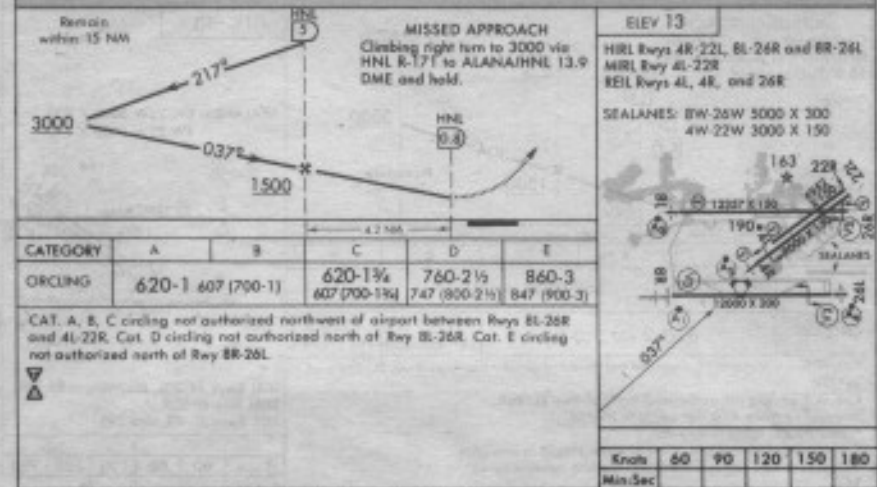
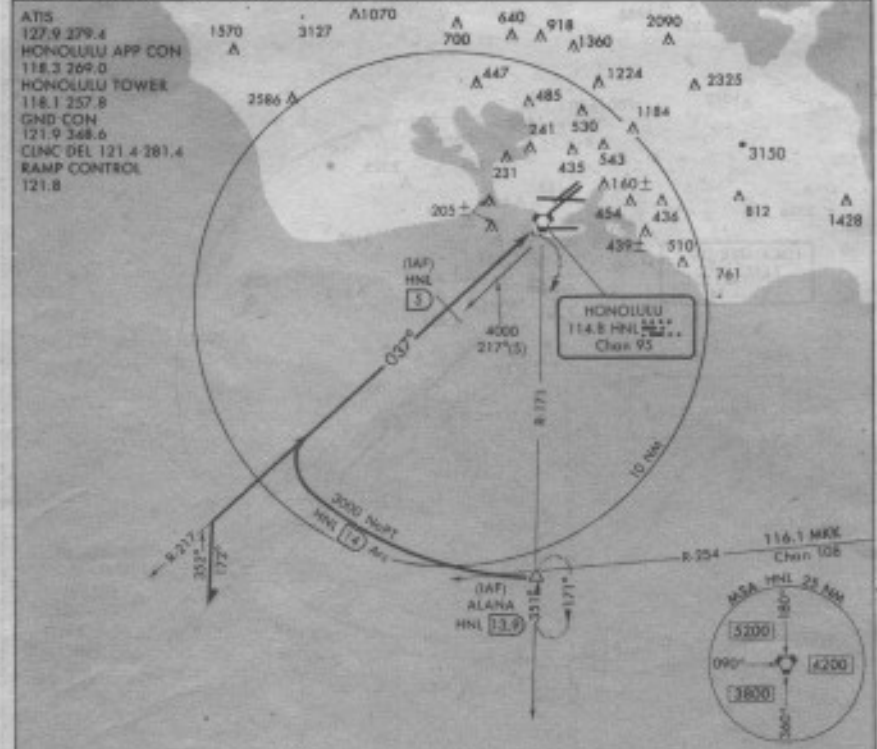


Amdt 2A 00055

AL-754 (FAA)

HONOLULU INTERNATIONAL (HNL)  
HONOLULU, HAWAII

VOR/DME or TACAN or GPS-B



VOR/DME or TACAN or GPS-B

Amdt 2A 00055

21°19'N-157°36'W

HONOLULU INTERNATIONAL (HNL)

Source: U.S. Department of Transportation, 2001

**Air Space Diagram  
(VOR/DME or TACAN  
or GPS-B)**

**Figure K-4**



**ATIS**  
 127.9 279.4  
 HONOLULU APP CON  
 118.3 269.0  
 HONOLULU TOWER  
 118.1 237.8  
 GND CON  
 121.9 348.6  
 CLNC DEL 121.4 281.4  
 RAMP CONTROL  
 121.8

**HONOLULU**  
 114.8 HNL 22.5  
 Chan 95

**1570** **3127** **Δ1070** **Δ700** **918** **1360** **2090**  
**Δ640** **Δ1224** **Δ2325** **Δ160±** **Δ436** **Δ439±** **Δ510** **Δ812** **Δ1428**

**2586** **Δ447** **Δ485** **Δ530** **Δ1184** **Δ543** **Δ160±** **Δ436** **Δ439±** **Δ510** **Δ812** **Δ1428**

**HONOLULU**  
 114.8 HNL 22.5  
 Chan 95

**205±** **Δ231** **Δ435** **Δ530** **Δ1184** **Δ543** **Δ160±** **Δ436** **Δ439±** **Δ510** **Δ812** **Δ1428**

**4000** **198° (4.3)** **Δ205±** **Δ231** **Δ435** **Δ530** **Δ1184** **Δ543** **Δ160±** **Δ436** **Δ439±** **Δ510** **Δ812** **Δ1428**

**(JAF)** **DANE INT** **HNL** **(4.3)** **1500** **NuPT** **(3)** **018°** **Δ241** **(JAF)** **ALANA** **HNL** **(13.9)** **117.9** **CRM** **Chan 80** **112.9** **CRM** **Chan 80**

**3000** **to Keolu Int** **HNL** **(1.6)** **Arc and** **018° (4.5)** **1500** **NuPT** **(3)** **018°** **Δ241** **(JAF)** **ALANA** **HNL** **(13.9)** **117.9** **CRM** **Chan 80** **112.9** **CRM** **Chan 80**

**3000** **to Keolu Int** **283° (5.4) and 018° (3.3)** **1500** **NuPT** **(3)** **018°** **Δ241** **(JAF)** **ALANA** **HNL** **(13.9)** **117.9** **CRM** **Chan 80** **112.9** **CRM** **Chan 80**

**3000** **to Keolu Int** **283° (5.4) and 018° (3.3)** **1500** **NuPT** **(3)** **018°** **Δ241** **(JAF)** **ALANA** **HNL** **(13.9)** **117.9** **CRM** **Chan 80** **112.9** **CRM** **Chan 80**

**3000** **to Keolu Int** **283° (5.4) and 018° (3.3)** **1500** **NuPT** **(3)** **018°** **Δ241** **(JAF)** **ALANA** **HNL** **(13.9)** **117.9** **CRM** **Chan 80** **112.9** **CRM** **Chan 80**

**3000** **to Keolu Int** **283° (5.4) and 018° (3.3)** **1500** **NuPT** **(3)** **018°** **Δ241** **(JAF)** **ALANA** **HNL** **(13.9)** **117.9** **CRM** **Chan 80** **112.9** **CRM** **Chan 80**

**3000** **to Keolu Int** **283° (5.4) and 018° (3.3)** **1500** **NuPT** **(3)** **018°** **Δ241** **(JAF)** **ALANA** **HNL** **(13.9)** **117.9** **CRM** **Chan 80** **112.9** **CRM** **Chan 80**

**3000** **to Keolu Int** **283° (5.4) and 018° (3.3)** **1500** **NuPT** **(3)** **018°** **Δ241** **(JAF)** **ALANA** **HNL** **(13.9)** **117.9** **CRM** **Chan 80** **112.9** **CRM** **Chan 80**

**3000** **to Keolu Int** **283° (5.4) and 018° (3.3)** **1500** **NuPT** **(3)** **018°** **Δ241** **(JAF)** **ALANA** **HNL** **(13.9)** **117.9** **CRM** **Chan 80** **112.9** **CRM** **Chan 80**

**3000** **to Keolu Int** **283° (5.4) and 018° (3.3)** **1500** **NuPT** **(3)** **018°** **Δ241** **(JAF)** **ALANA** **HNL** **(13.9)** **117.9** **CRM** **Chan 80** **112.9** **CRM** **Chan 80**

**3000** **to Keolu Int** **283° (5.4) and 018° (3.3)** **1500** **NuPT** **(3)** **018°** **Δ241** **(JAF)** **ALANA** **HNL** **(13.9)** **117.9** **CRM** **Chan 80** **112.9** **CRM** **Chan 80**

**3000** **to Keolu Int** **283° (5.4) and 018° (3.3)** **1500** **NuPT** **(3)** **018°** **Δ241** **(JAF)** **ALANA** **HNL** **(13.9)** **117.9** **CRM** **Chan 80** **112.9** **CRM** **Chan 80**

**3000** **to Keolu Int** **283° (5.4) and 018° (3.3)** **1500** **NuPT** **(3)** **018°** **Δ241** **(JAF)** **ALANA** **HNL** **(13.9)** **117.9** **CRM** **Chan 80** **112.9** **CRM** **Chan 80**

**3000** **to Keolu Int** **283° (5.4) and 018° (3.3)** **1500** **NuPT** **(3)** **018°** **Δ241** **(JAF)** **ALANA** **HNL** **(13.9)** **117.9** **CRM** **Chan 80** **112.9** **CRM** **Chan 80**

**3000** **to Keolu Int** **283° (5.4) and 018° (3.3)** **1500** **NuPT** **(3)** **018°** **Δ241** **(JAF)** **ALANA** **HNL** **(13.9)** **117.9** **CRM** **Chan 80** **112.9** **CRM** **Chan 80**

**3000** **to Keolu Int** **283° (5.4) and 018° (3.3)** **1500** **NuPT** **(3)** **018°** **Δ241** **(JAF)** **ALANA** **HNL** **(13.9)** **117.9** **CRM** **Chan 80** **112.9** **CRM** **Chan 80**

**3000** **to Keolu Int** **283° (5.4) and 018° (3.3)** **1500** **NuPT** **(3)** **018°** **Δ241** **(JAF)** **ALANA** **HNL** **(13.9)** **117.9** **CRM** **Chan 80** **112.9** **CRM** **Chan 80**

**3000** **to Keolu Int** **283° (5.4) and 018° (3.3)** <

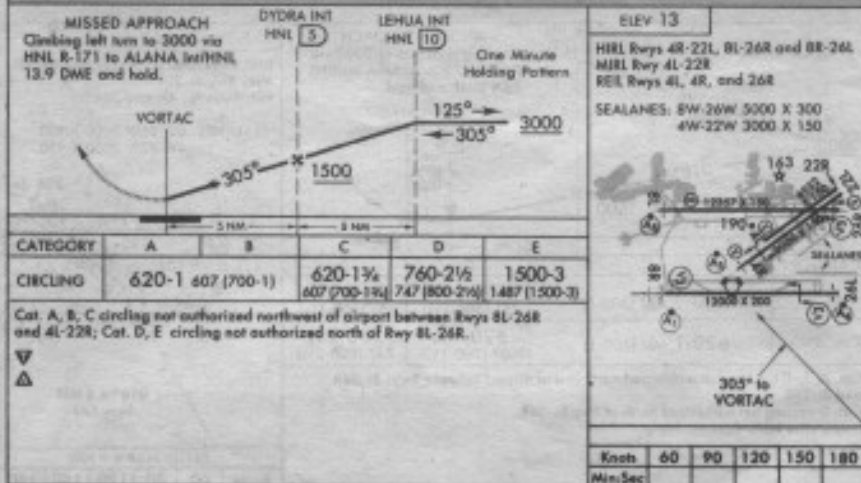
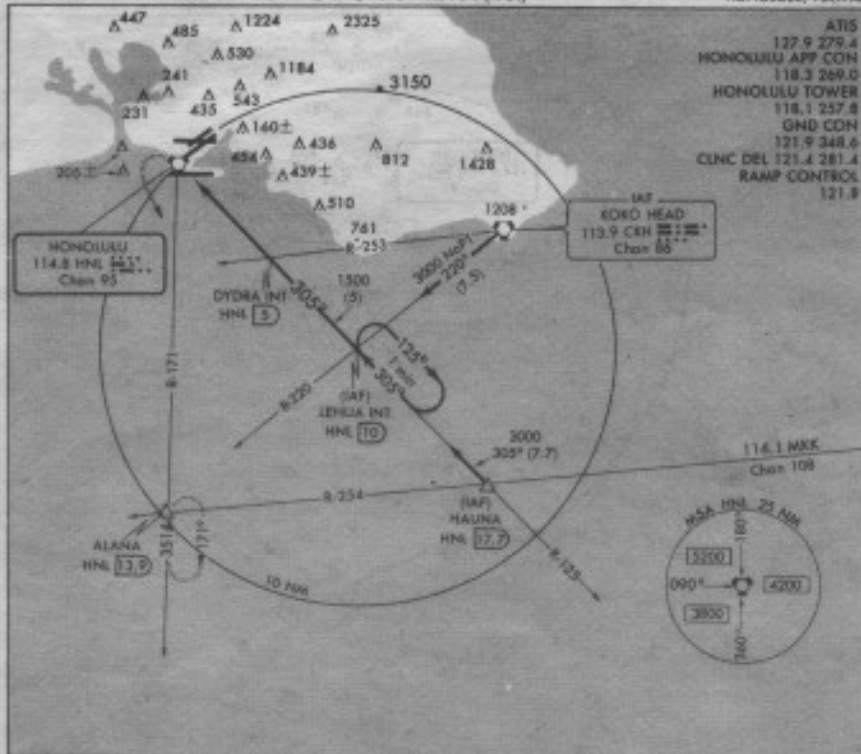
K-5

Amdt 1A 00055

VOR or TACAN or GPS-A AL-754 (FAA)

HONOLULU INTERNATIONAL (HNL)

HONOLULU, HAWAII



VOR or TACAN or GPS-A 21°19'N-157°56'W

HONOLULU, HAWAII

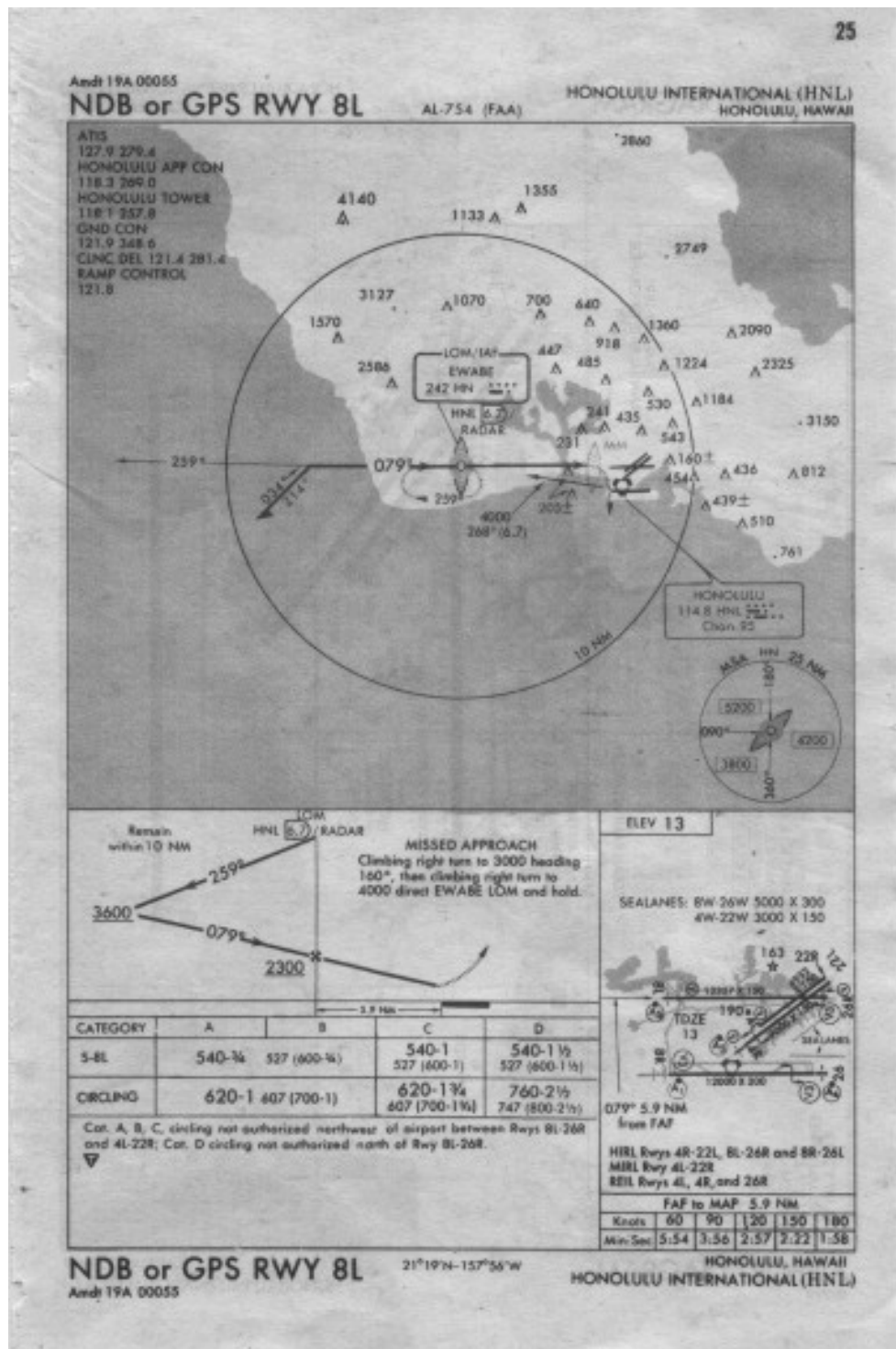
HONOLULU INTERNATIONAL (HNL)

Amdt 1A 00055

Source: U.S. Department of Transportation, 2001

**Air Space Diagram  
(VOR or TACAN or  
GPS-A)**

**Figure K-6**

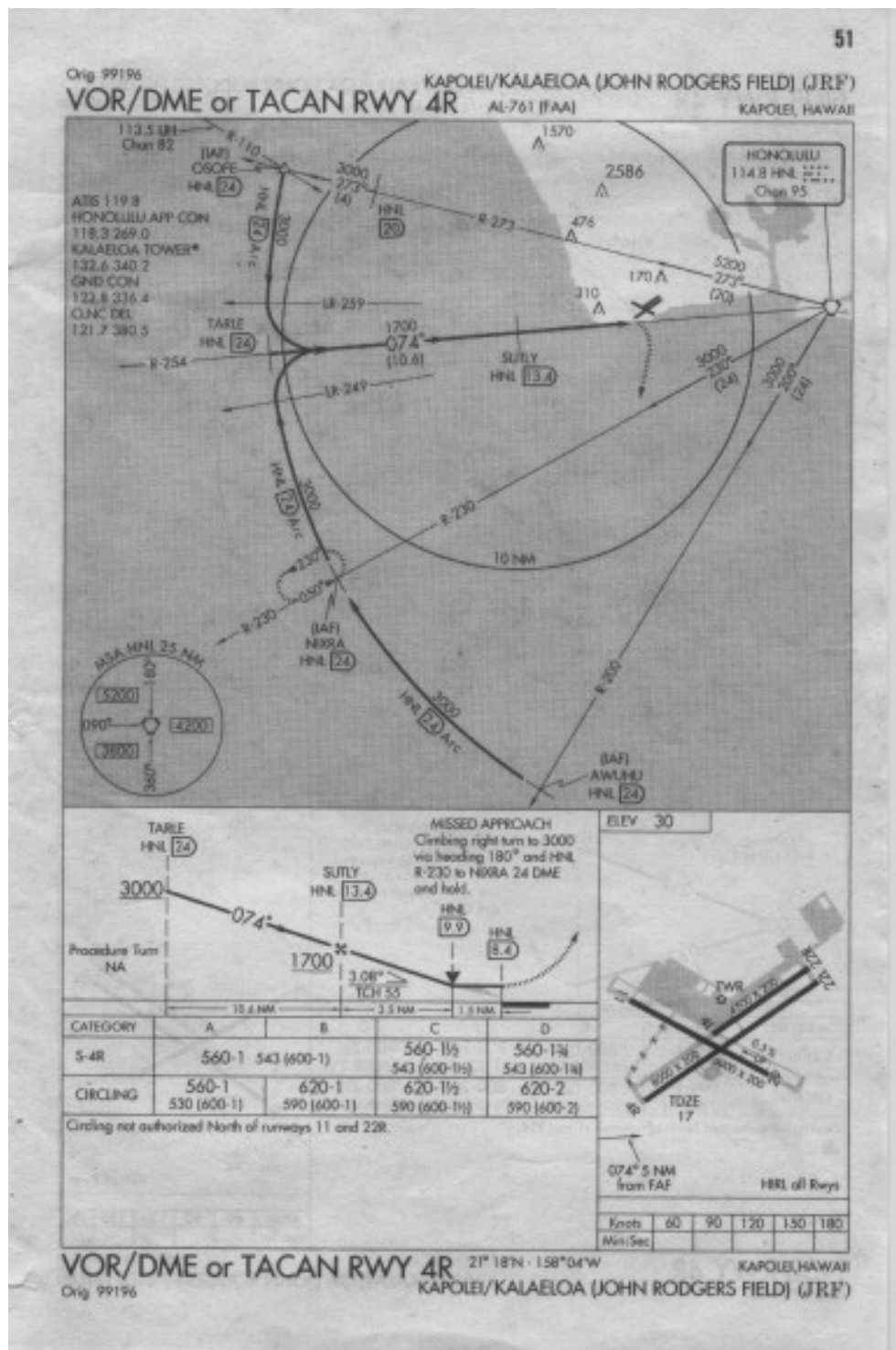


Source: U.S. Department of Transportation, 2001

**Air Space Diagram  
(NDB or GPS RWY 8L)**

**Figure K-7**





Source: U.S. Department of Transportation, 2001

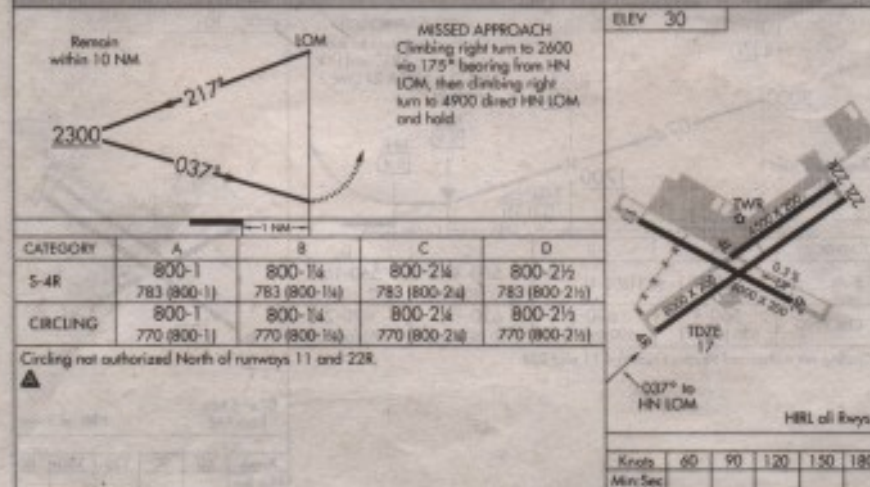
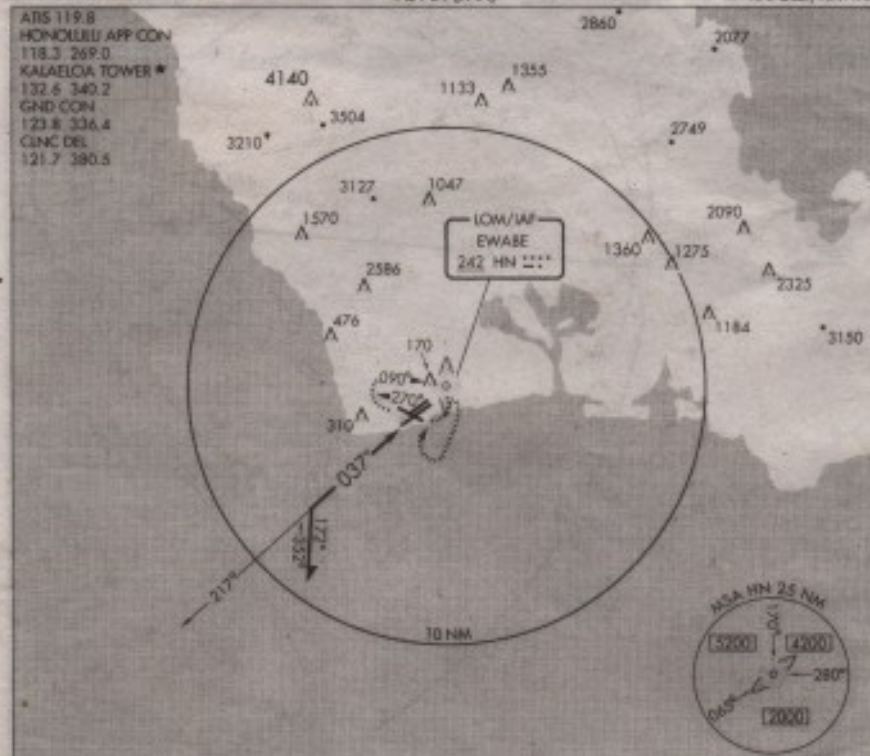
## Air Space Diagram (VOR/DME or TACAN RWY 4R)

Figure K-8

Orig 99196

**NDB RWY 4R**KAPOLEI/KALAELOA (JOHN RODGERS FIELD) (JRF)  
AL-761 (FAA) KAPOLEI, HAWAII

ATIS 119.8  
HONOLULU APP CON  
118.3 269.0  
KALAELOA TOWER \*  
132.6 340.2  
GND CON  
123.8 336.4  
CINC DEL  
121.7 380.5

**NDB RWY 4R**

Orig 99196

21° 18'N - 158° 04'W

KAPOLEI/KALAELOA (JOHN RODGERS FIELD) (JRF)

**Air Space Diagram  
(NDB RWY 4R)**

**Figure K-9**

Source: U.S. Department of Transportation, 2001

**THIS PAGE INTENTIONALLY LEFT BLANK**